

Epidemiological data as of 06/28/20



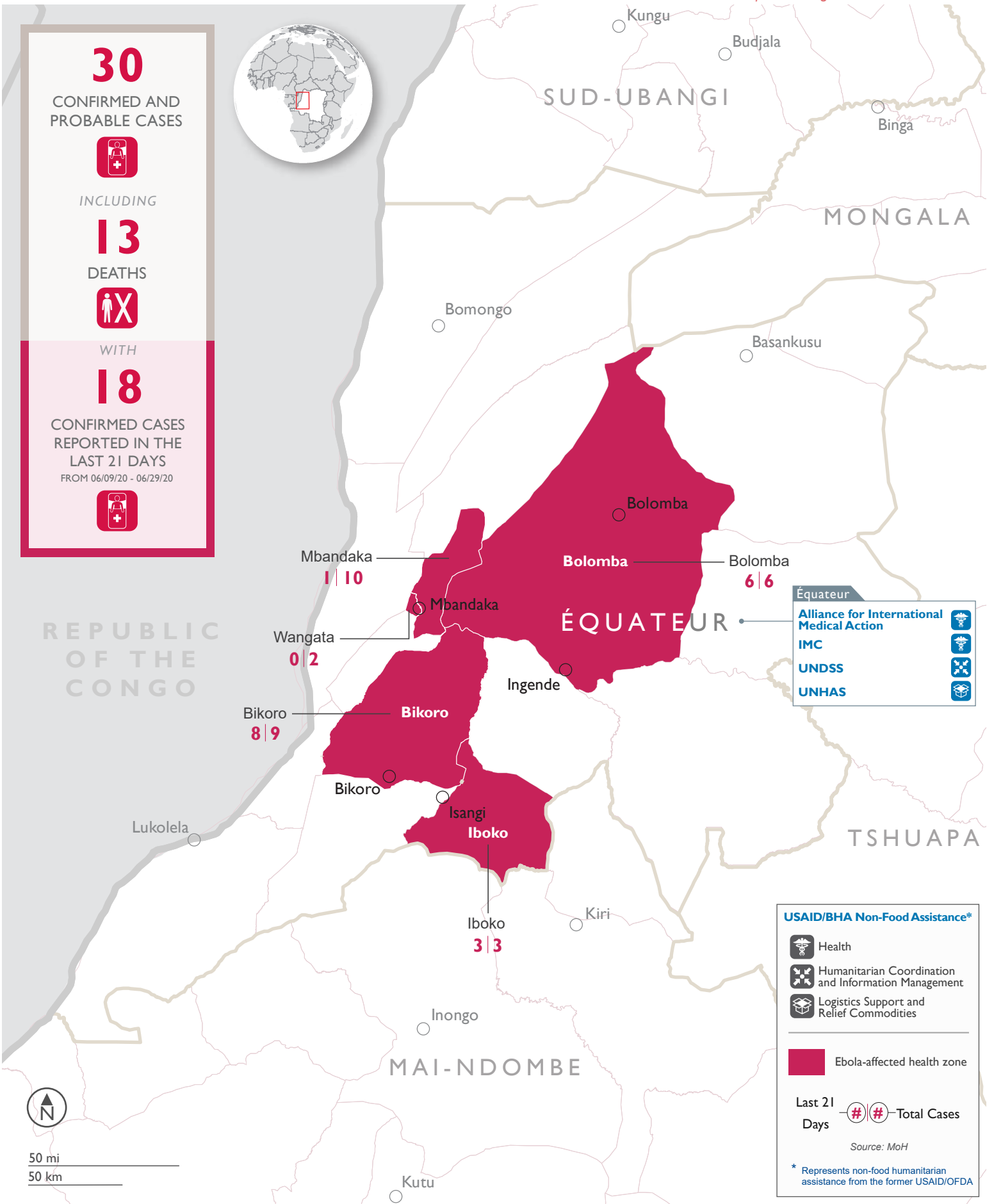
30
CONFIRMED AND PROBABLE CASES

INCLUDING

13
DEATHS

WITH

18
CONFIRMED CASES REPORTED IN THE LAST 21 DAYS
FROM 06/09/20 - 06/29/20



Équateur

- Alliance for International Medical Action
- IMC
- UNDSS
- UNHAS

USAID/BHA Non-Food Assistance*

- Health
- Humanitarian Coordination and Information Management
- Logistics Support and Relief Commodities

■ Ebola-affected health zone

Last 21 Days **# #** - Total Cases

Source: MoH

* Represents non-food humanitarian assistance from the former USAID/OFDA



50 mi
50 km