



USAID
FROM THE AMERICAN PEOPLE



USG RESPONSE TO THE EBOLA OUTBREAK IN WEST AFRICA

Last Updated 01/14/15

CRISIS IMPACT

21,261

CUMULATIVE CASE COUNT



8,414

CUMULATIVE CASE DEATHS



Source: WHO Roadmap Strep 01/14/2015

GUINEA

- CRS
- ChildFund
- FRC
- HKI
- IFRC
- Internews
- IOM
- Plan
- RI
- SC/US
- Terres Des Hommes
- UNICEF
- WFP

REGIONAL

- A.U.
- UNICEF
- Commodity Airlift
- JHCCP
- WHO
- WFP

SIERRA LEONE

- IFRC
- IMC
- IOM
- IRC
- Medair
- PiH
- UNICEF
- WFP
- WHO
- World Vision

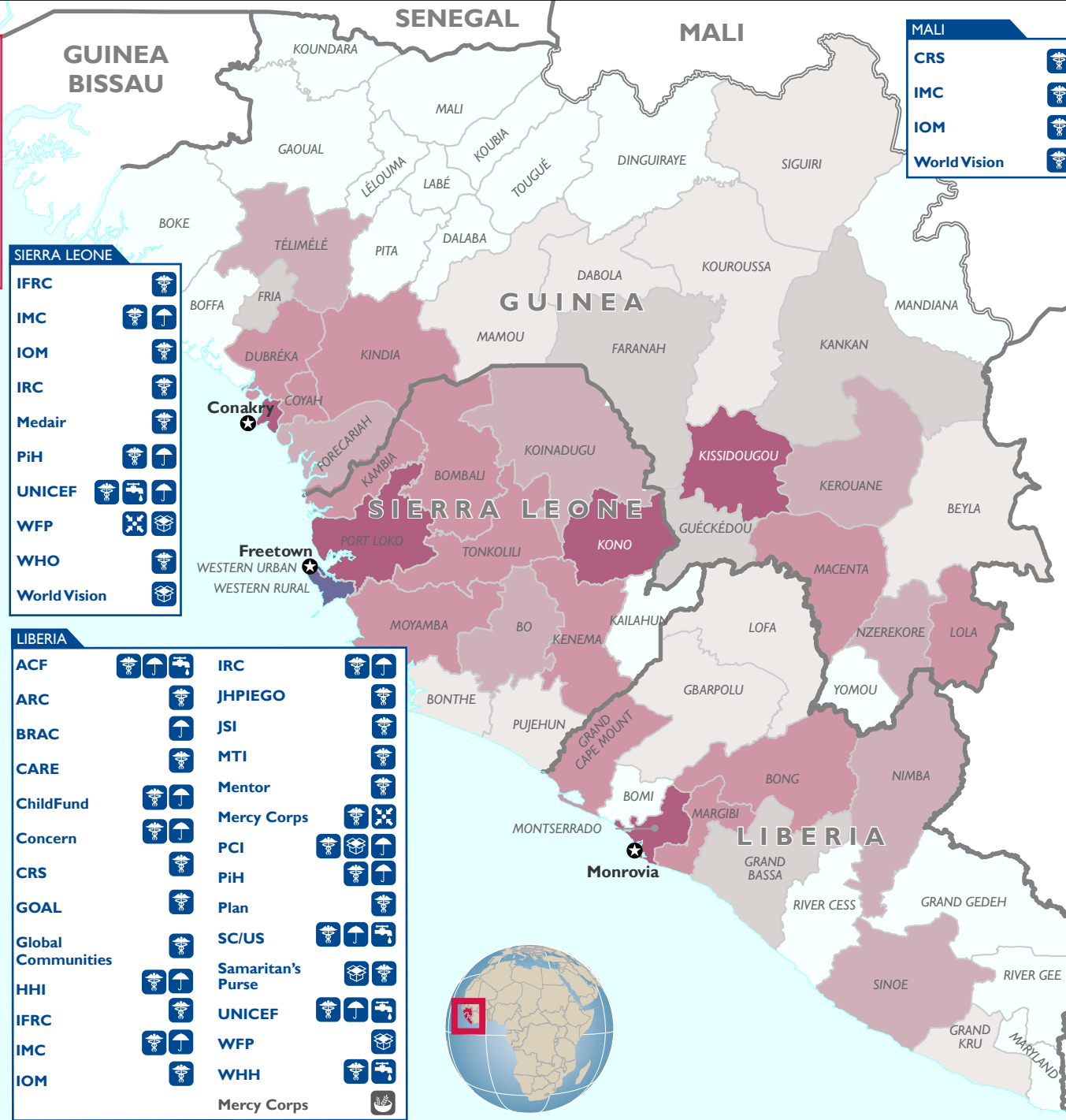
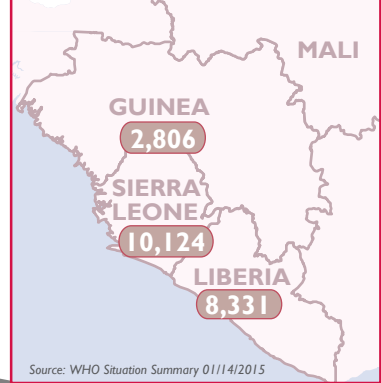
LIBERIA

- ACF
- ARC
- BRAC
- CARE
- ChildFund
- Concern
- CRS
- GOAL
- Global Communities
- HHI
- IFRC
- IMC
- IOM
- IRC
- JHPIEGO
- JSI
- MTI
- Mentor
- Mercy Corps
- PCI
- PiH
- Plan
- SC/US
- Samaritan's Purse
- UNICEF
- WFP
- WHH
- Mercy Corps

MALI

- CRS
- IMC
- IOM
- World Vision

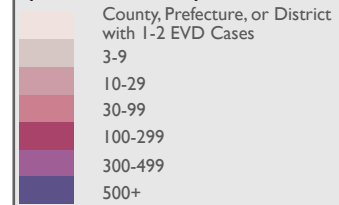
COUNTRY CASES



KEY

- USAID/OFDA**
- USAID/GH**
- USAID/FFP**
- Open Country Border
- Closed Country Border
- Prefecture/District/County Border
- National Capital

New Cases by County (last three weeks)



Program Key

- Food Assistance
- Health
- Humanitarian Coordination & Information Management
- Logistics Support & Relief Commodities
- Protection
- Risk Management Policy and Practice
- WASH

The boundaries, names, and data used on this map do not imply official endorsement or acceptance by the U.S. Government and are not drawn to scale.